

DQE Online Report: GDQE BBR for INSAT-3DR IMAGER

RequestID : 3RIMG10MAR20170615L1CSGP

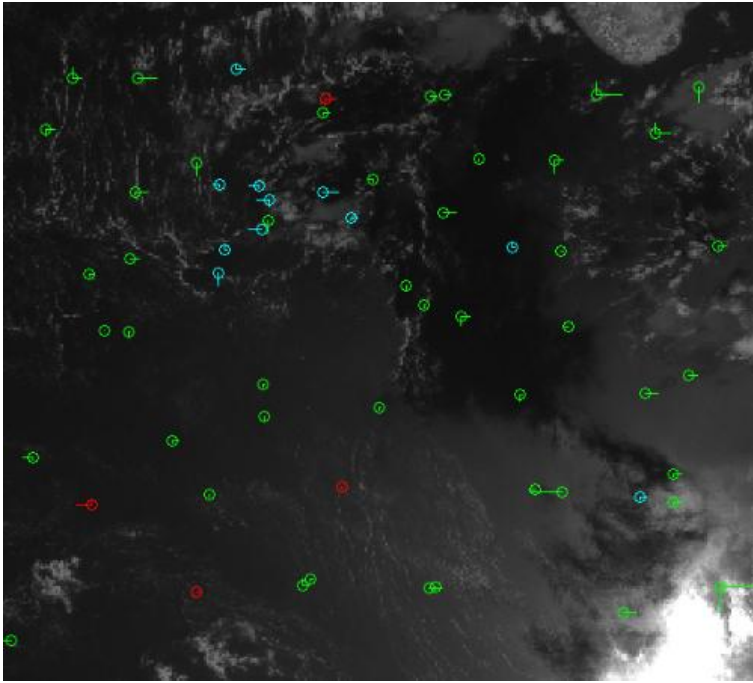
(-999.99 or -999.0 - Not Available/Not Computed)

Satellite	INSAT-3DR	TimeOfPass	06:15	ImagingMode	NONE	Roll (deg)	-999.00
Sensor	IMAGER	ProductType	SECTOR	Altitude(m)	36000000.00	Pitch (deg)	-999.00
DateOfPass	10-03-17	LevelOfProcessing	L1C	ReferenceBand	TIR1	Yaw (deg)	-999.00
Algorithm Used	SSDA	Format	hdf5-1.8.8	NoOfBands	6		
DQEDate	24-MAR-2017						

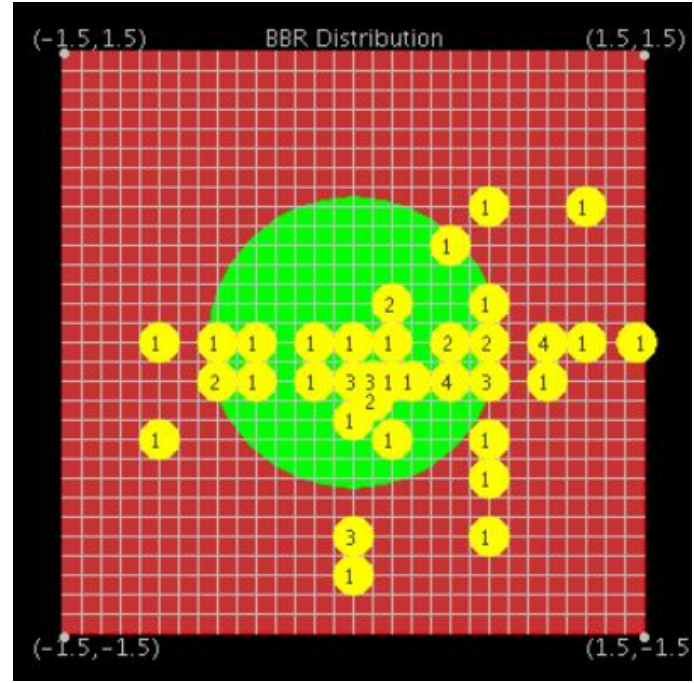
Band	AvgBBR		RMSBBR		STDBBR		MAXBBR		MINBBR		ABS		Range		CE_90 (Pixels)	TotRCPs
	Scan	Pixel	Scan	Pixel	Scan	Pixel	Scan	Pixel	Scan	Pixel	Scan	Pixel	Scan	Pixel		
MIR	0.20	0.33	0.51	0.86	0.47	0.79	2.00	3.00	-1.00	-2.50	2.00	3.00	3.00	5.50	1.25	57
SWIR	-0.22	-1.28	0.99	1.75	0.96	1.20	1.25	0.50	-1.75	-3.50	-1.75	-3.50	3.00	4.00	3.00	18
TIR2	0.14	0.39	0.47	0.59	0.45	0.45	2.25	2.00	-1.25	-0.75	2.25	2.00	3.50	2.75	1.12	61
VIS	-0.16	-1.04	0.99	1.37	0.98	0.89	2.00	0.25	-1.75	-3.25	2.00	-3.25	3.75	3.50	2.24	32

Band-to-Band Registration - Band Name MIR

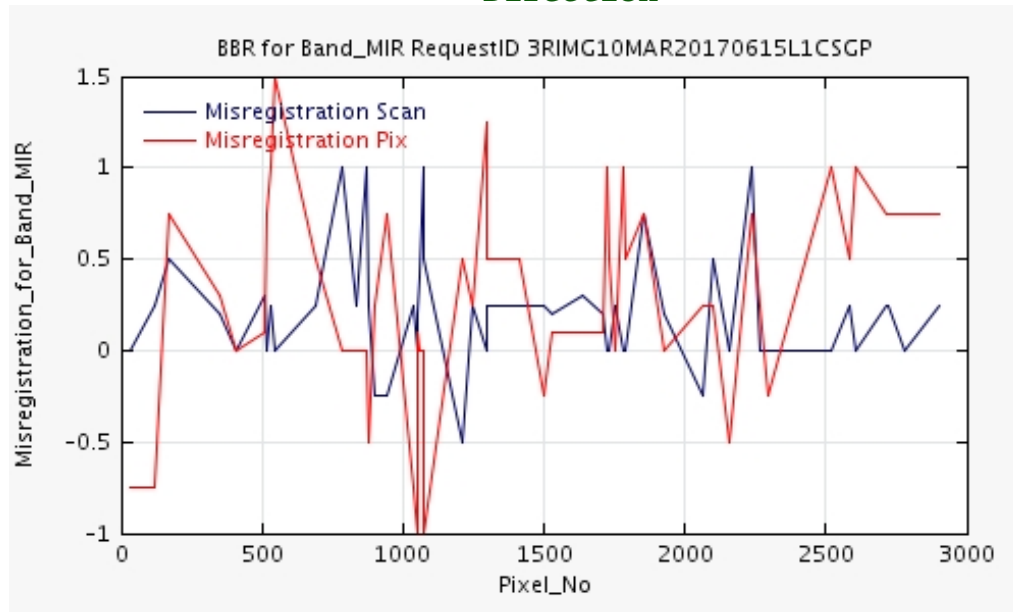
RCP Distribution



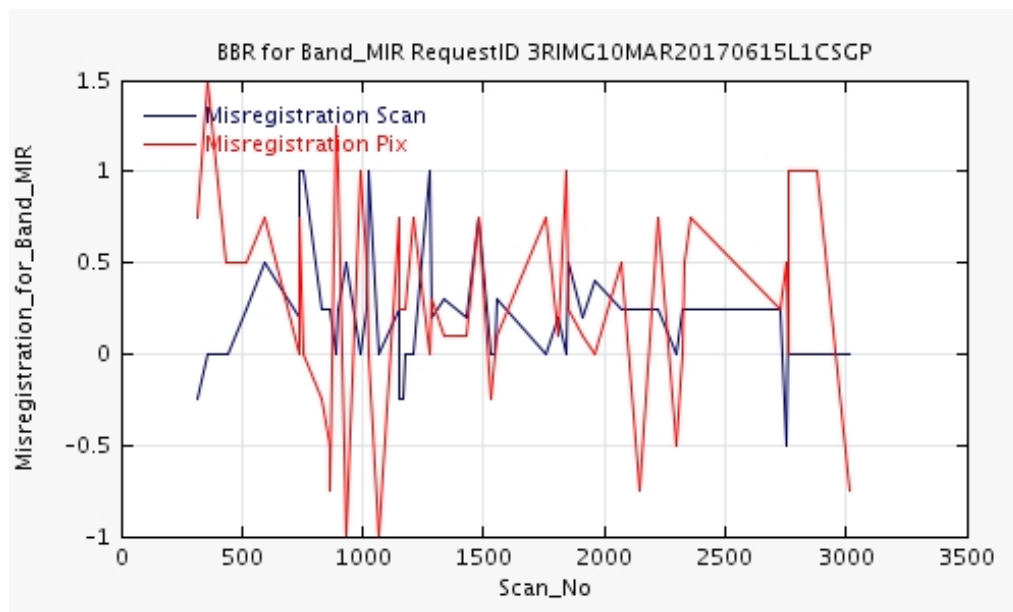
BBR Deviation



BBR Variation in Across Direction

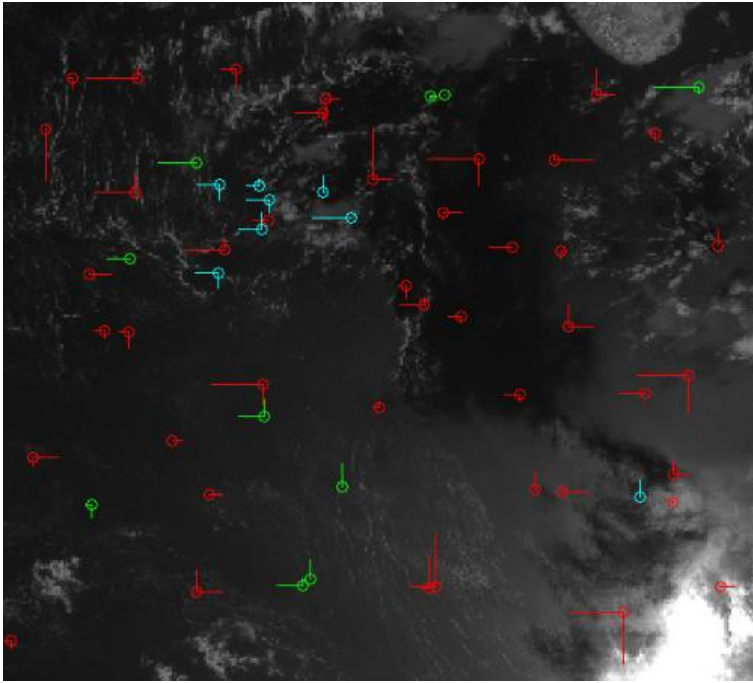


BBR Variation in Along Direction

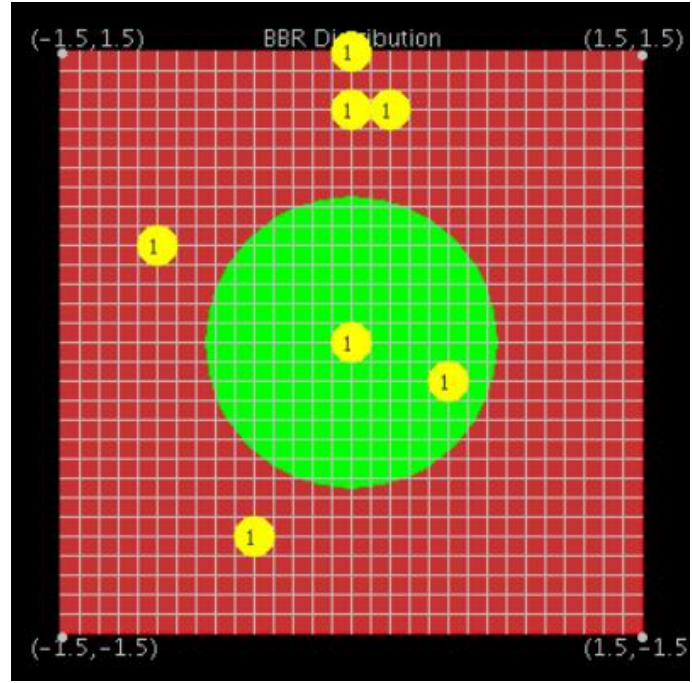


Band-to-Band Registration - Band Name SWIR

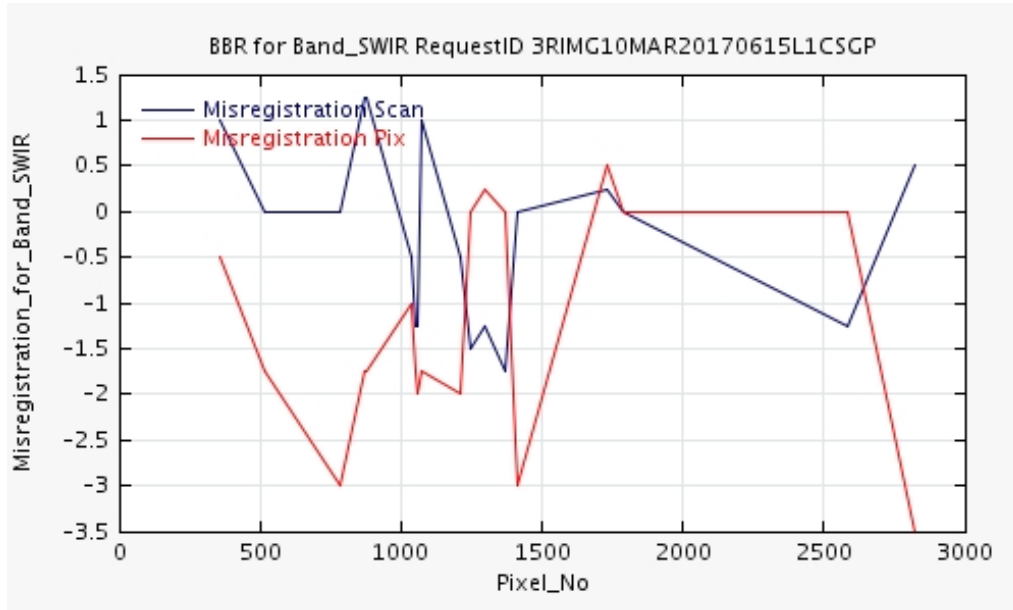
RCP Distribution



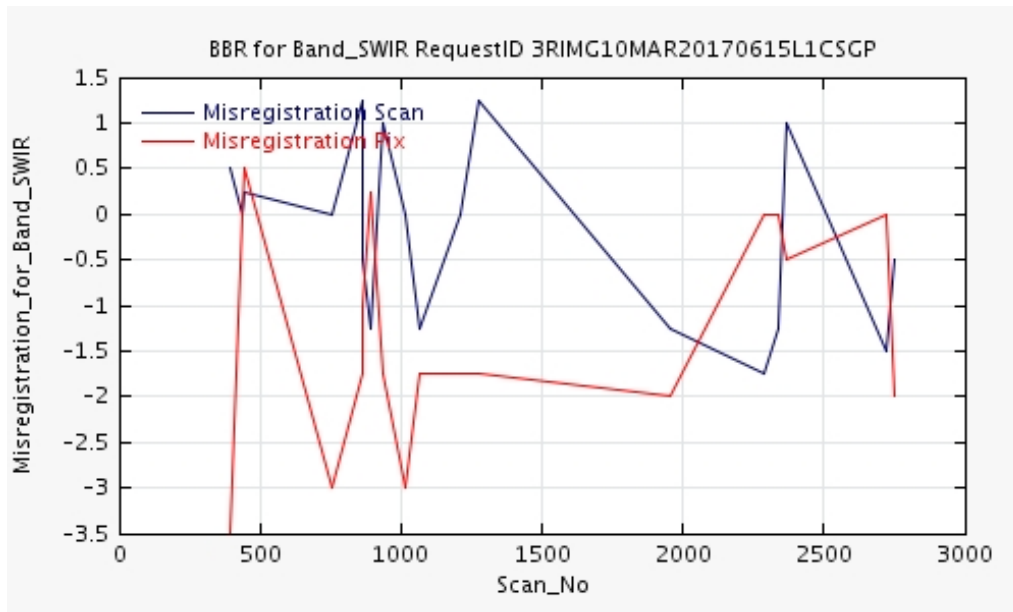
BBR Deviation



BBR Variation in Across Direction

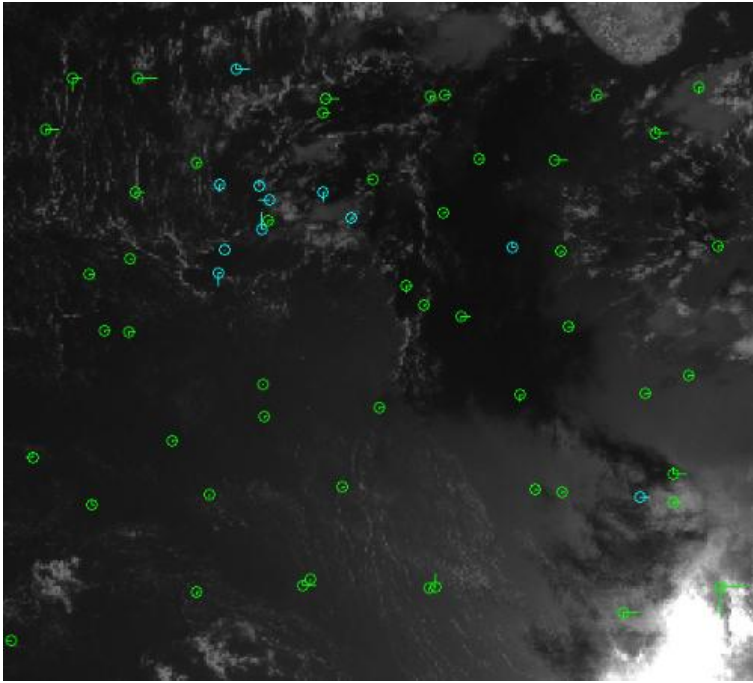


BBR Variation in Along Direction

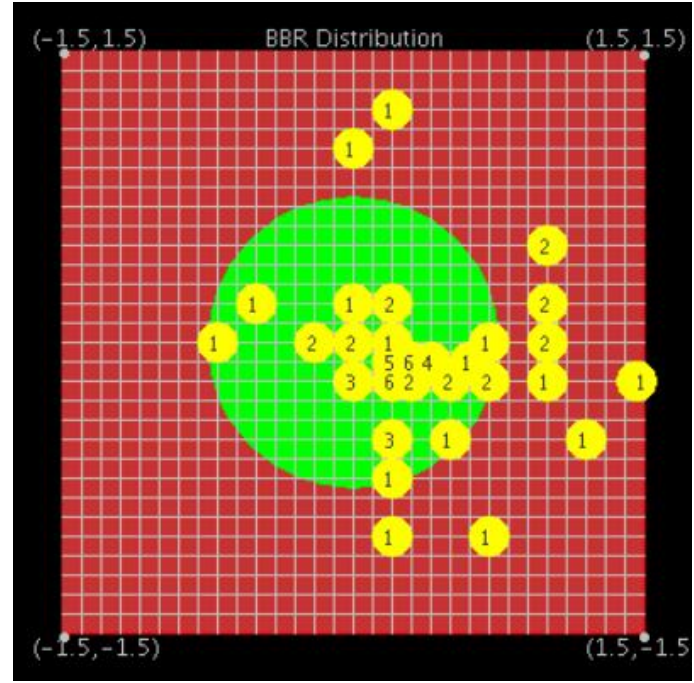


Band-to-Band Registration - Band Name TIR2

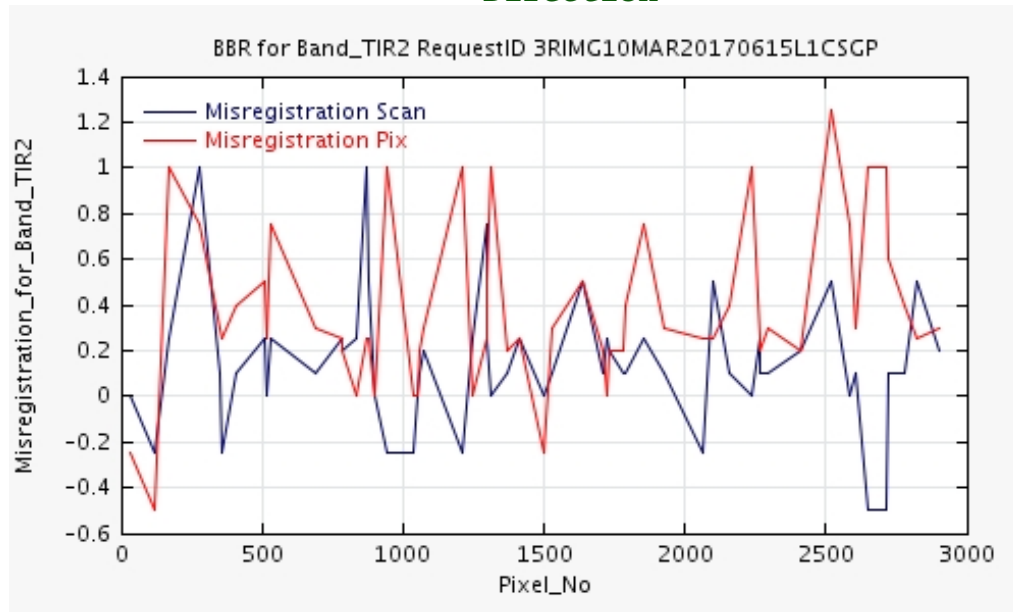
RCP Distribution



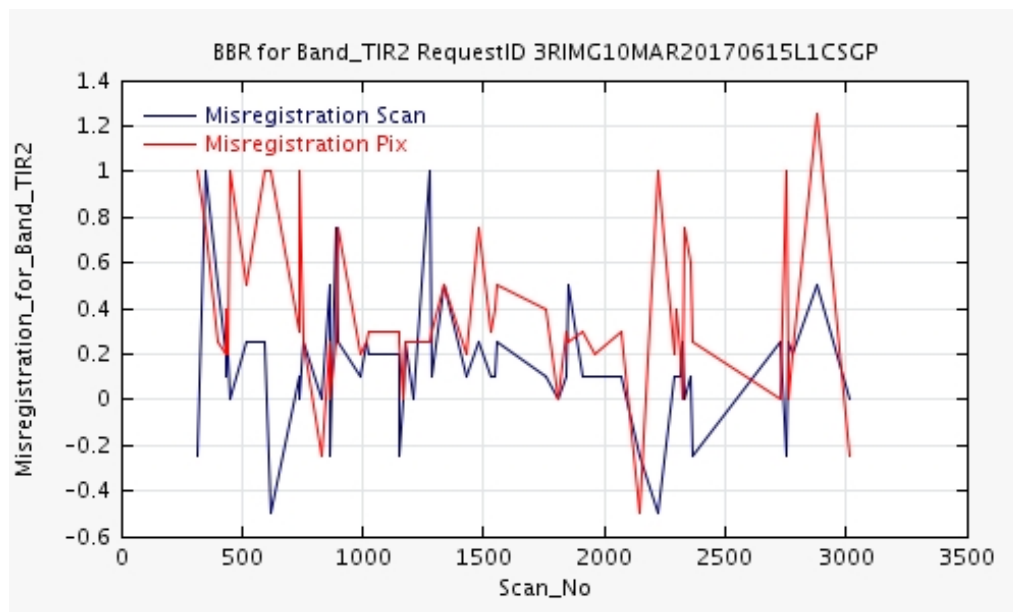
BBR Deviation



BBR Variation in Across Direction

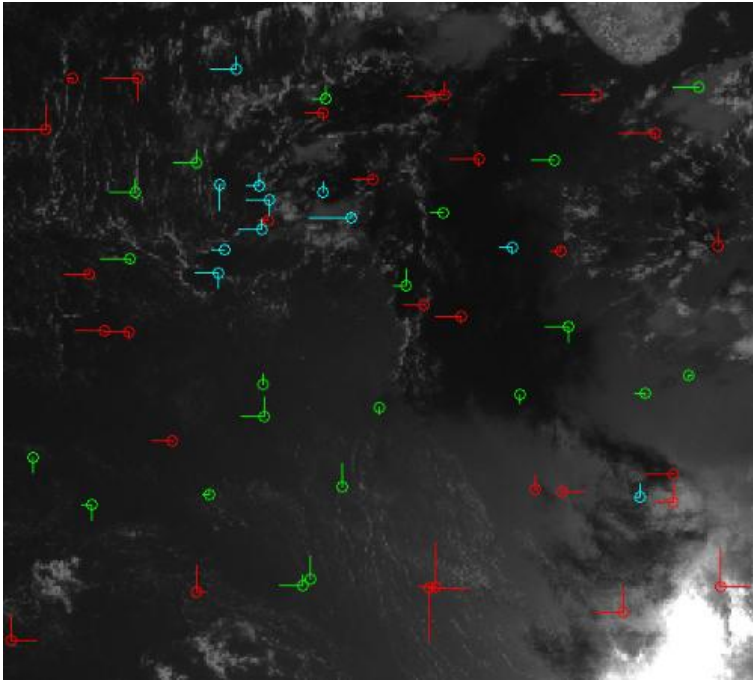


BBR Variation in Along Direction

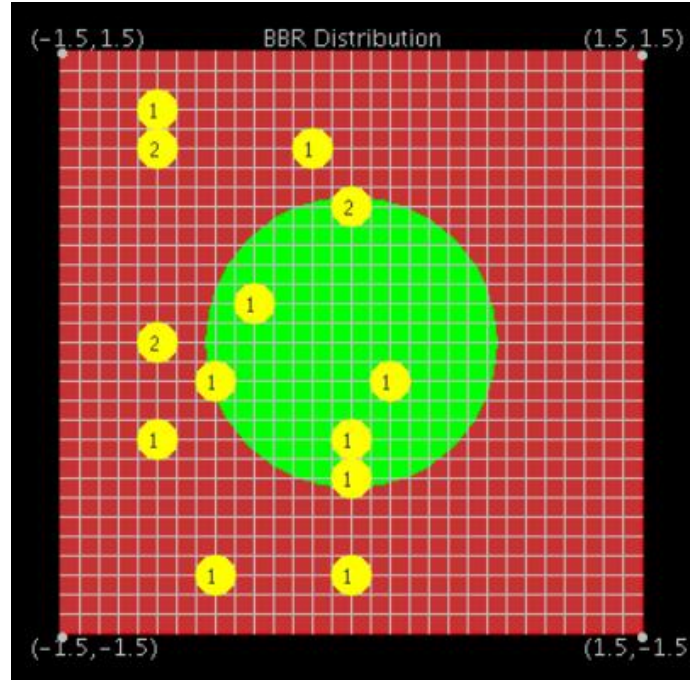


Band-to-Band Registration - Band Name VIS

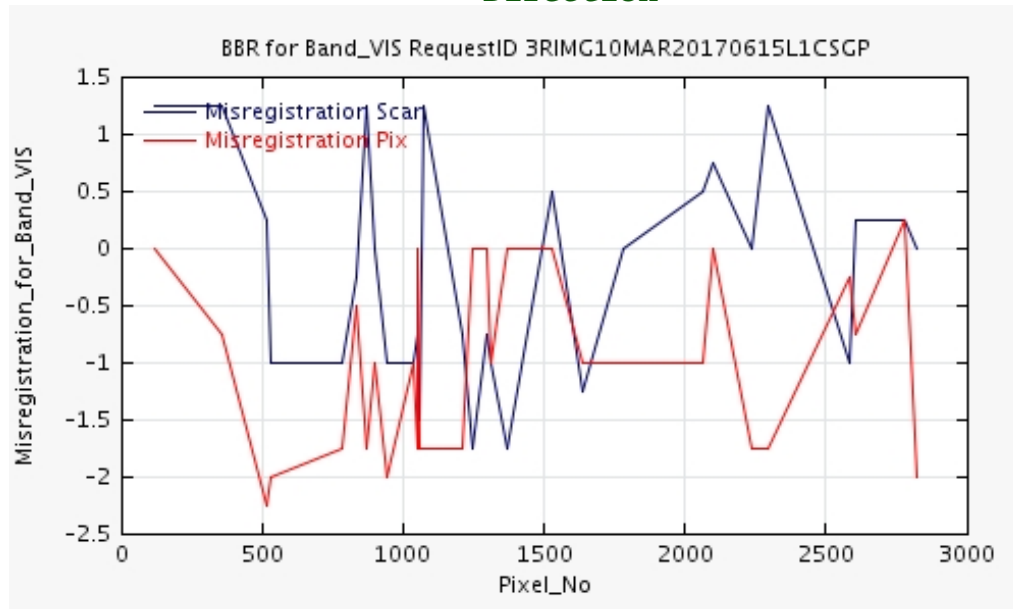
RCP Distribution



BBR Deviation



BBR Variation in Across Direction



BBR Variation in Along Direction

